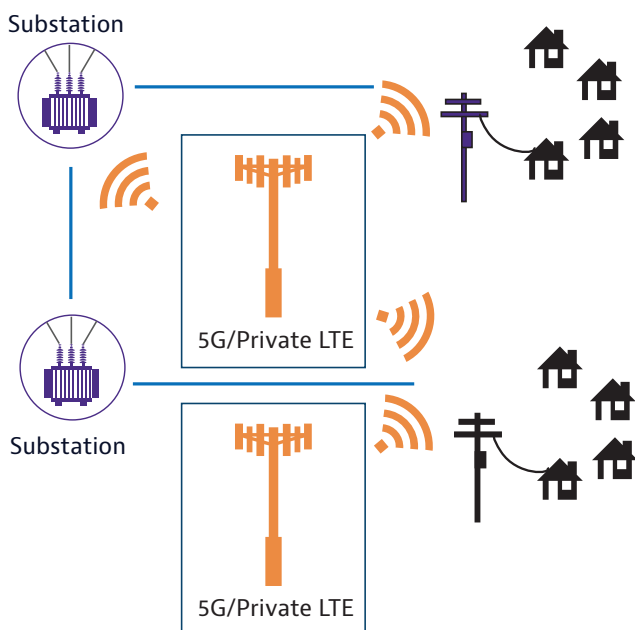


Ensure Reliable Installation and Operation of Power Utility Wireless Networks

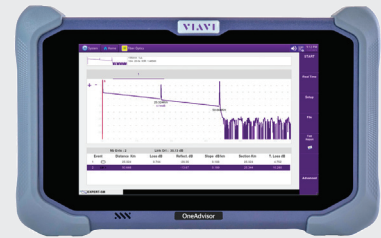
VIAVI OneAdvisor 800 – All-in-One Wireless Installation and Maintenance Test Solution

Use of private wireless (LTE and 5G) networks by power utility operators is growing. Wireless networks can provide a flexible, reliable and cost-effective alternative to fiber for digital connectivity to critical electric grid locations and equipment — enabling use cases like grid modernization, distribution automation and AMI. At the same time, many operators lack experienced personnel to build, operate and maintain wireless networks.

The VIAVI OneAdvisor (ONA) is a flexible and easy-to-use platform that provides comprehensive wireless network testing including cable and antenna analysis, interference identification and location as well as real-time spectral analysis. It is an effective tool for all phases of the network lifecycle from construction and activation to maintenance and troubleshooting of the operational network. Additionally, the modular design of the ONA makes it expandable to support fiber inspection and OTDR applications so technicians can test fiber network (fronthaul and backhaul) connectivity to wireless antenna locations.



16679001123



Key Benefits

- Cable and antenna reflection tests, distance to fault and cable loss
- Real-time persistence spectrum from 9KHz to 6/9/18/32/44 GHz
- Spectrum analysis with gated sweep for interference analysis in LTE or 5G TDD signals
- RFoCPRI interference analysis to effectively characterize interfering signals as received by the radio
- Over-the-Air RF spectrogram testing and logging capability to effectively characterize intermittent interference signals
- Interference finding with triangulation when is paired with the VIAVI AntennaAdvisor
- Spectrum route map, validating radio's coverage and signal propagation
- Fiber inspection and fiber validation including OTDR testing



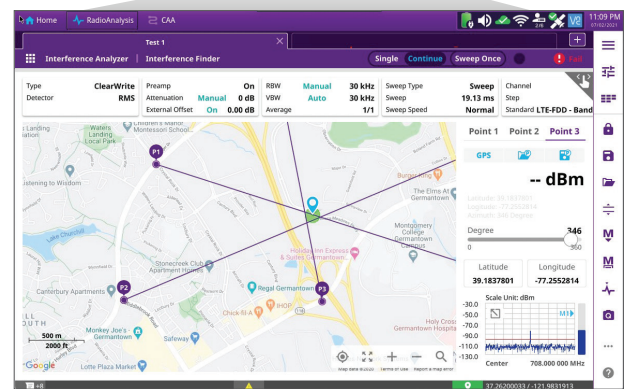
Key OneAdvisor Wireless and Microwave Test Applications

Comprehensive Wireless and Microwave Testing

OneAdvisor 800 Signal Analysis functions provides the most comprehensive measurement techniques to effectively identify and characterize wireless signal quality. Including service cell site's identifier and key power indicators, as well as signal quality assessment of wireless control signals. Key signal analysis measurements include Blind Scan LTE Signal Analysis. Mapping is also supported for service coverage verification.

Interference Hunting and Route Mapping

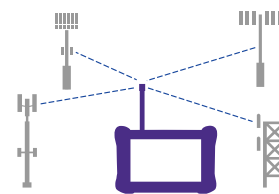
Interference Finder is an automatic triangulation algorithm performed by the OneAdvisor 800 that uses GPS to extract geo-coordinates in multiple test points to locate the source of interference. The interference finder automatically calculates the interference locations using an inscribed or circumscribed area based on the measured intersection points.



Real-Time Persistence Spectrum

OneAdvisor 800 real-time spectrum analysis (RTSA) performs a persistence power measurement through a defined frequency range in high-speed.

RTSA provides a comprehensive view of intermittent signals for a fast characterization of wireless signals and the identification of intermittent interference signals through its 2D and 3D spectrogram measurements that characterize signals in power, frequency, and time.



OneAdvisor 800 Real-time Spectrum Analysis

OneAdvisor 800 Real-Time Spectrogram



Contact Us **+1 844 GO VIAVI**
(+1 844 468 4284)

To reach the VIAVI office nearest you,
visit viavisolutions.com/contact

© 2023 VIAVI Solutions Inc.
Product specifications and descriptions in this document are subject to change without notice.
Patented as described at
viavisolutions.com/patents
powerutility-ona800wir-fly-xpf-nse-ae
30193904 900 1123